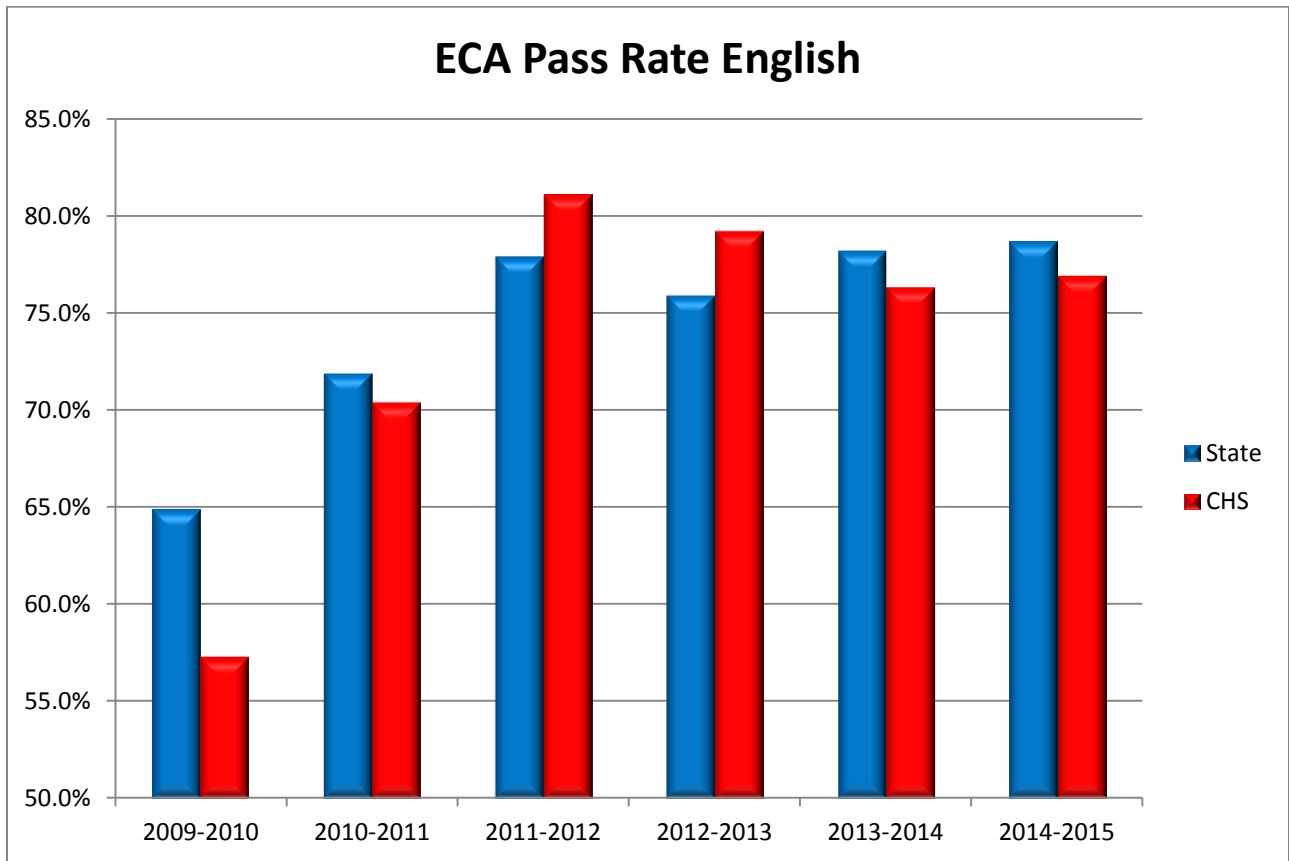


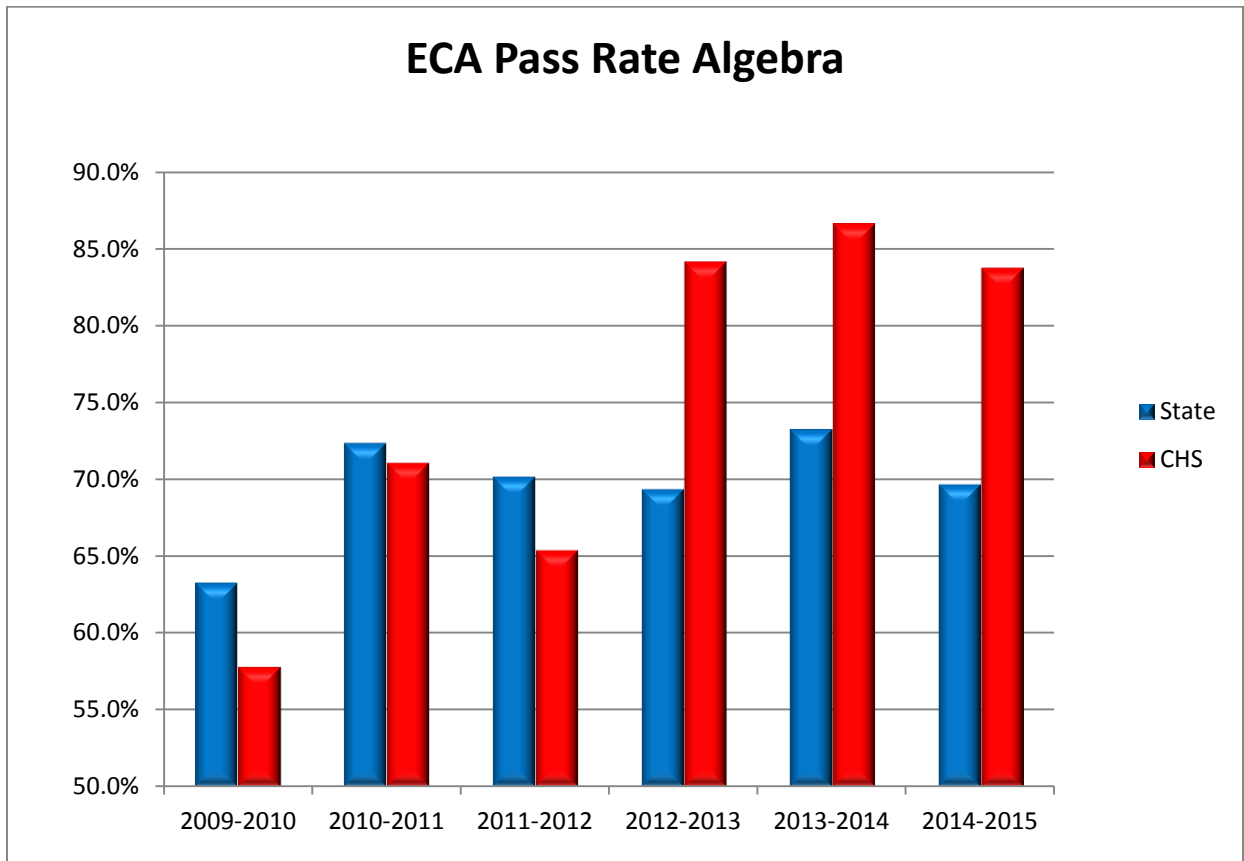
ECA Pass Rate English

	State	CHS
2009-2010	64.9%	57.3%
2010-2011	71.9%	70.4%
2011-2012	77.9%	81.1%
2012-2013	75.9%	79.2%
2013-2014	78.2%	76.3%
2014-2015	78.7%	76.9%



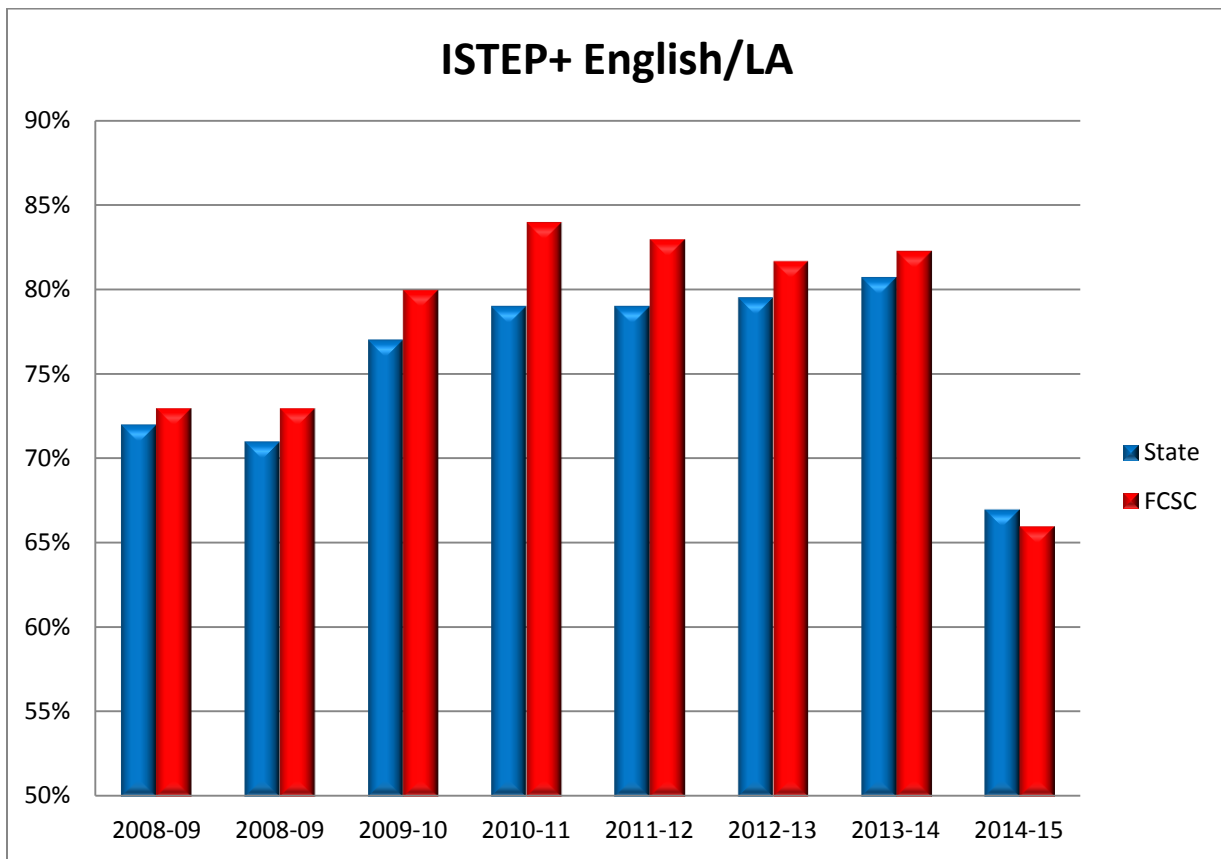
ECA Pass Rate Algebra

	State	CHS
2009-2010	63.3%	57.8%
2010-2011	72.4%	71.1%
2011-2012	70.2%	65.4%
2012-2013	69.4%	84.2%
2013-2014	73.3%	86.7%
2014-2015	69.7%	83.8%



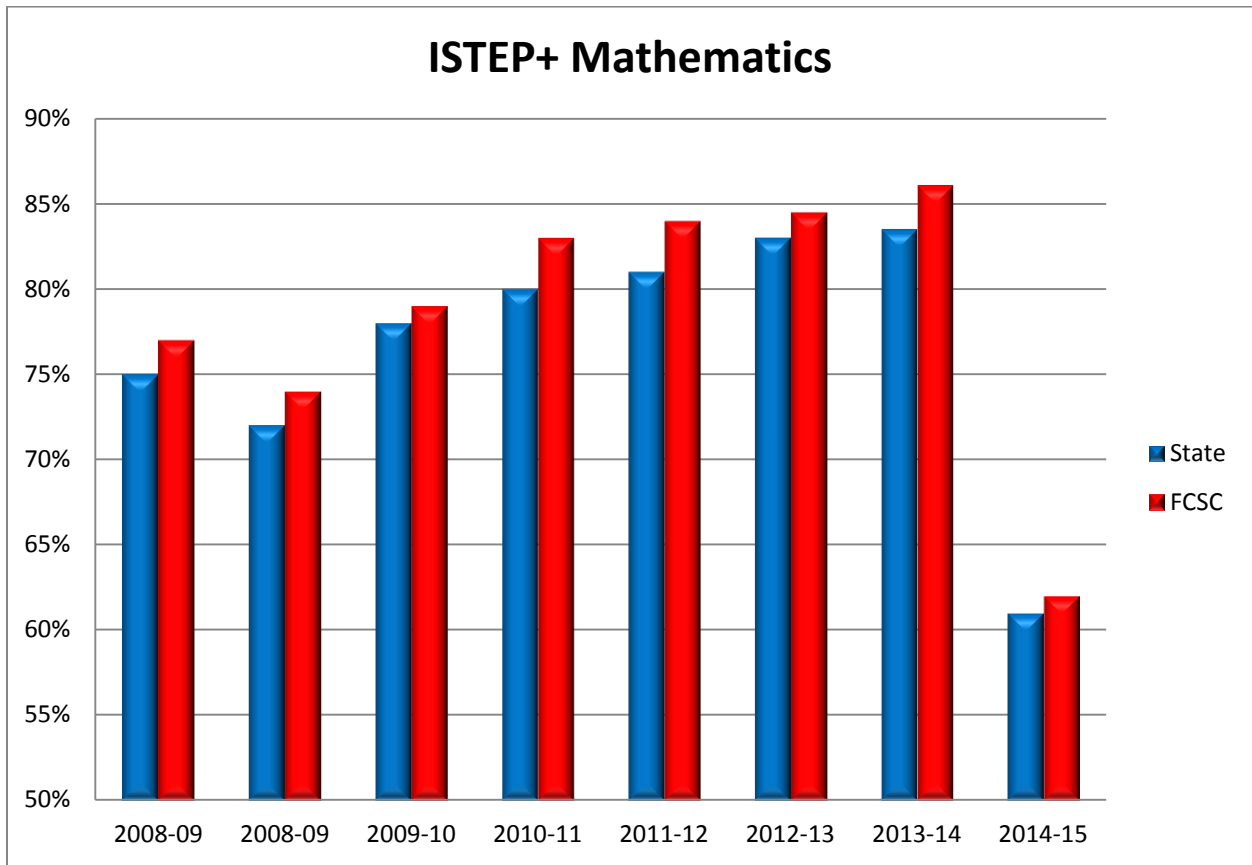
ISTEP+ English/Language Arts

	State	FCSC
2008-09	72%	73%
2008-09	71%	73%
2009-10	77%	80%
2010-11	79%	84%
2011-12	79%	83%
2012-13	80%	82%
2013-14	81%	82%
2014-15	67%	66%



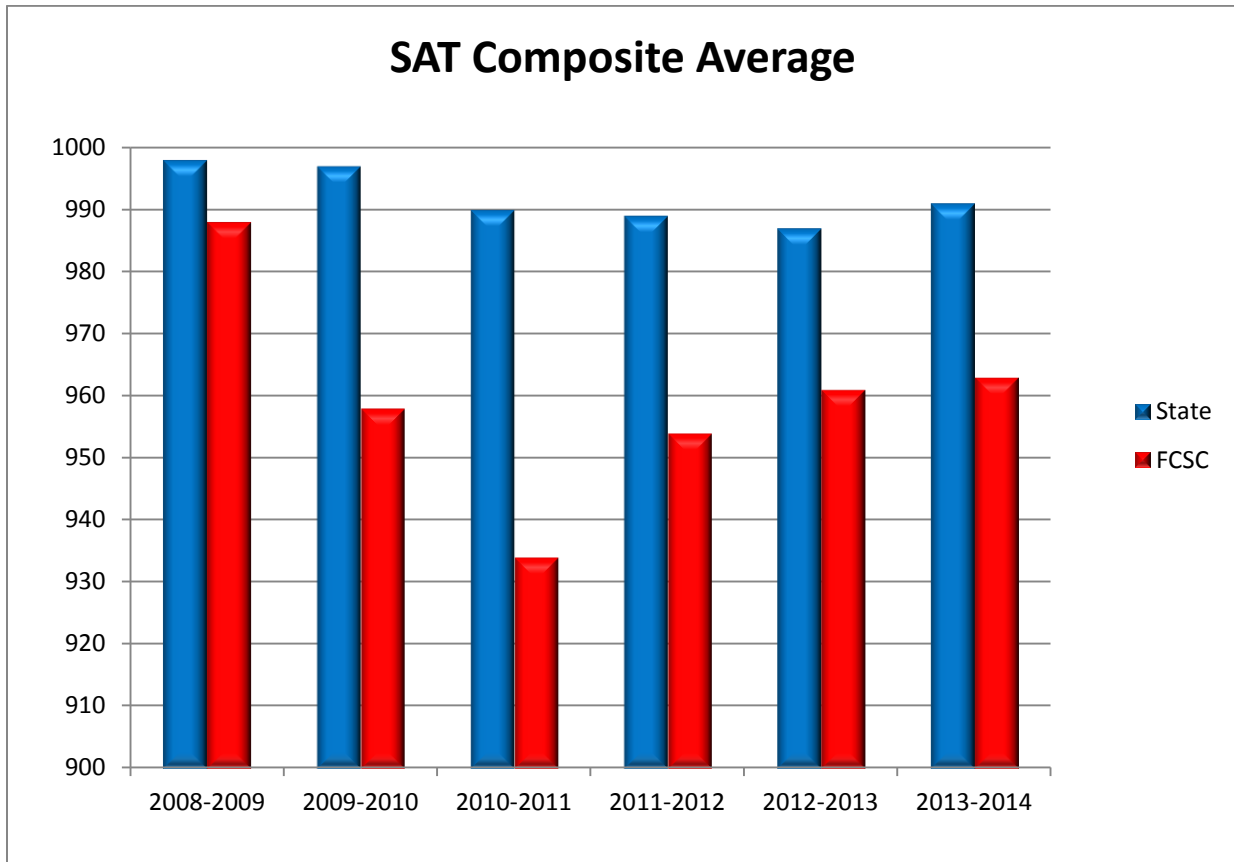
ISTEP+ Mathematics

	State	FCSC
2008-09	75%	77%
2008-09	72%	74%
2009-10	78%	79%
2010-11	80%	83%
2011-12	81%	84%
2012-13	83%	85%
2013-14	84%	86%
2014-15	61%	62%



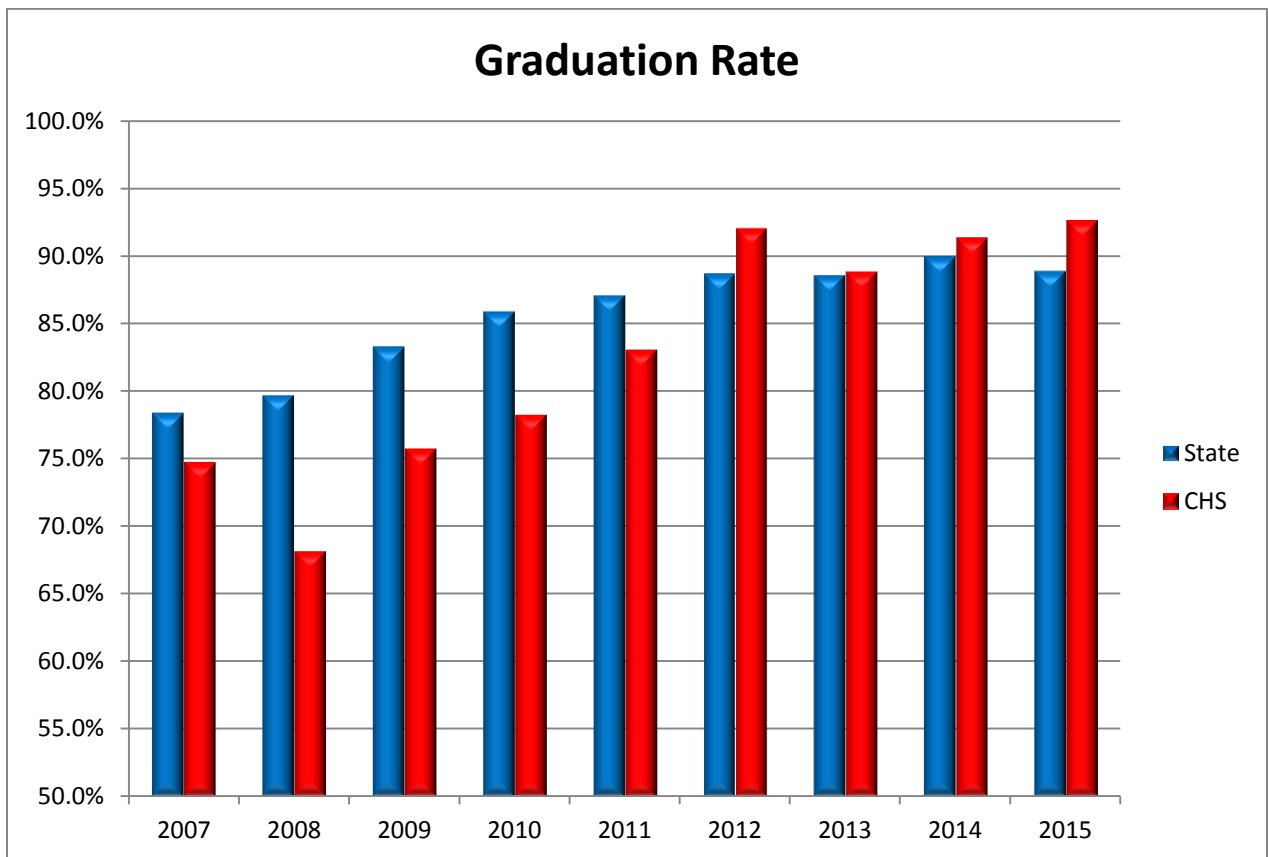
SAT Composite Average

	State	FCSC
2006-2007	999	982
2007-2008	1000	978
2008-2009	998	988
2009-2010	997	958
2010-2011	990	934
2011-2012	989	954
2012-2013	987	961
2013-2014	991	963



CHS Graduates

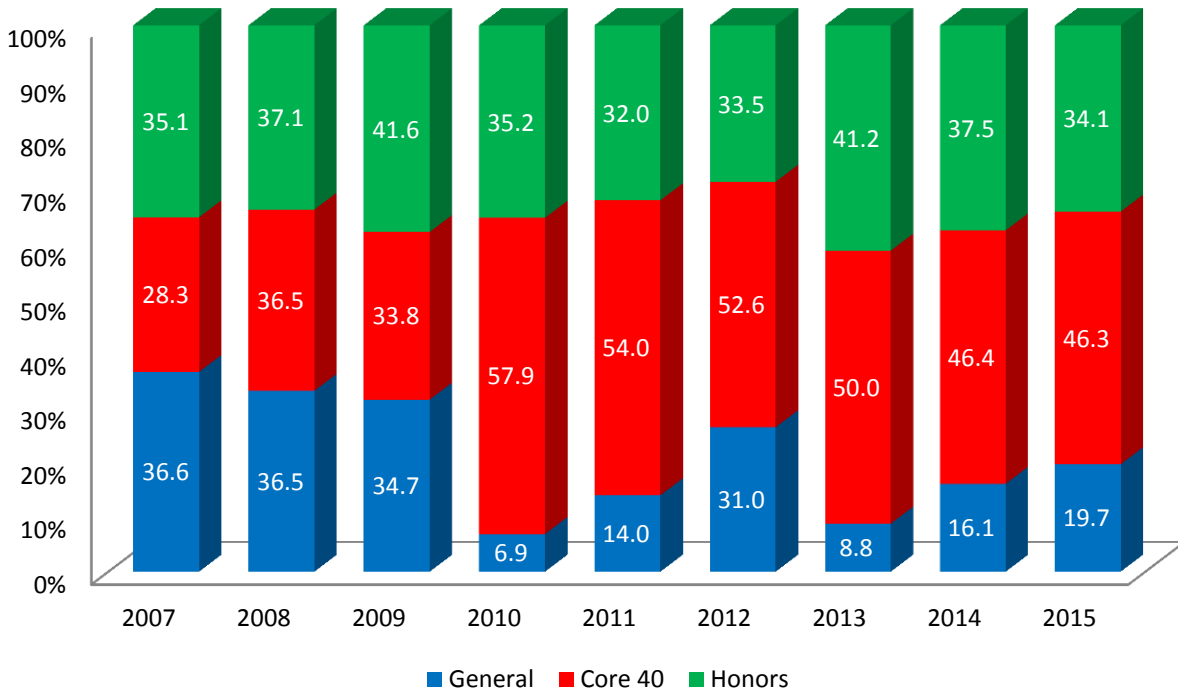
	State	CHS
2007	78.4%	74.8%
2008	79.7%	68.2%
2009	83.3%	75.8%
2010	85.9%	78.3%
2011	87.1%	83.1%
2012	88.7%	92.1%
2013	88.6%	88.9%
2014	90.0%	91.4%
2015	88.9%	92.7%



CHS Graduates

	General	Core 40	Honors
2007	36.6	28.3	35.1
2008	36.5	36.5	37.1
2009	34.7	33.8	41.6
2010	6.9	57.9	35.2
2011	14.0	54.0	32.0
2012	31.0	52.6	33.5
2013	8.8	50.0	41.2
2014	16.1	46.4	37.5
2015	19.7	46.3	34.1

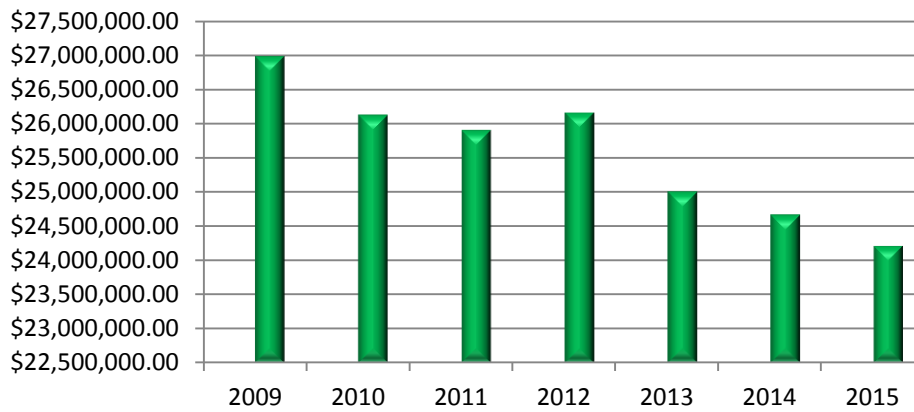
Diploma Types Earned



General Fund Revenue

2009	\$	26,987,059
2010	\$	26,128,236
2011	\$	25,908,504
2012	\$	26,166,373
2013	\$	25,007,383
2014	\$	24,670,031
2015	\$	24,216,114

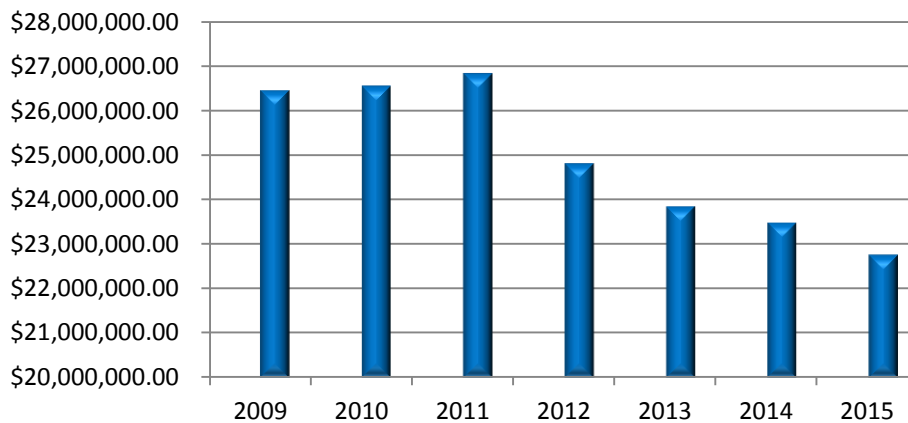
General Fund Revenue



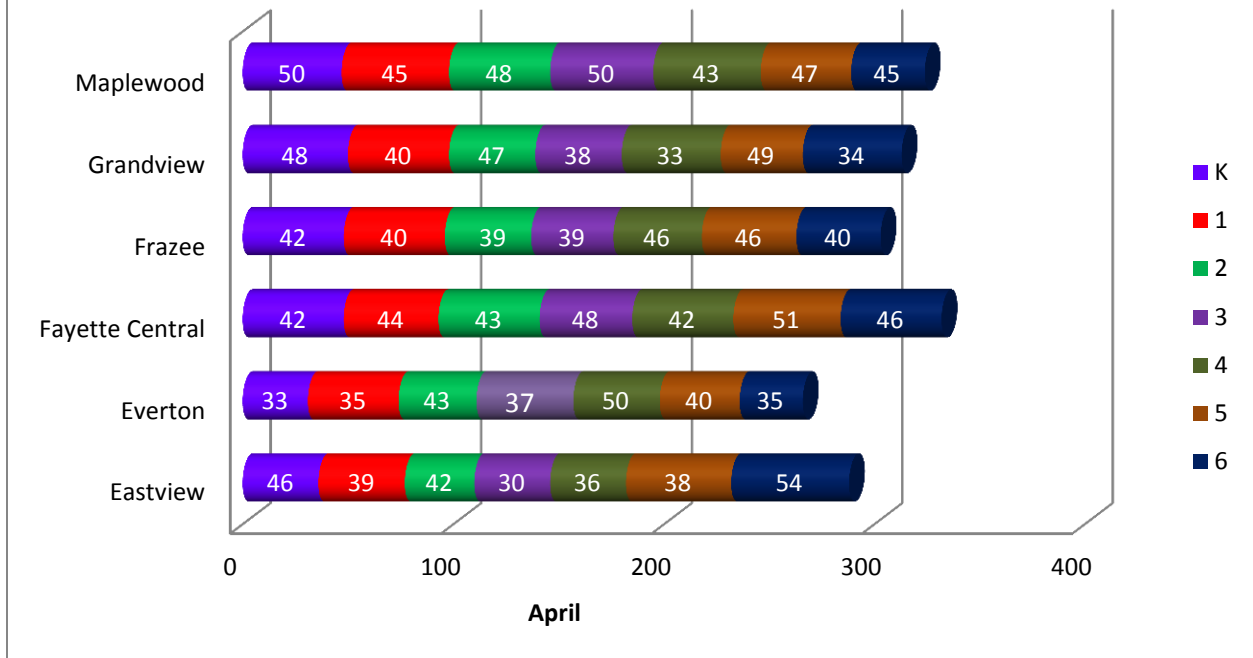
General Fund Expenditure

2009	\$	26,469,773
2010	\$	26,572,303
2011	\$	26,851,103
2012	\$	24,825,843
2013	\$	23,859,573
2014	\$	23,499,631
2015	\$	22,771,196

General Fund Expenditure



Elementary Enrollment 2016



Enrollment							
	2009-10	2010-11	2011-12	2012-13	2013-14	2014-15	2015-16
K	313	281	266	247	261	253	261
1	304	317	305	293	260	278	243
2	316	290	298	271	276	245	262
3	322	308	284	291	269	248	242
4	289	315	304	279	265	262	250
5	310	290	327	301	266	266	271
6	282	301	285	307	277	250	254
7	322	309	320	290	326	289	265
8	287	306	304	313	288	328	290
9	318	286	312	306	303	267	314
10	288	308	284	299	277	287	248
11	346	275	286	266	265	259	262
12	279	334	271	271	254	250	240
	3976	3920	3846	3734	3587	3482	3402